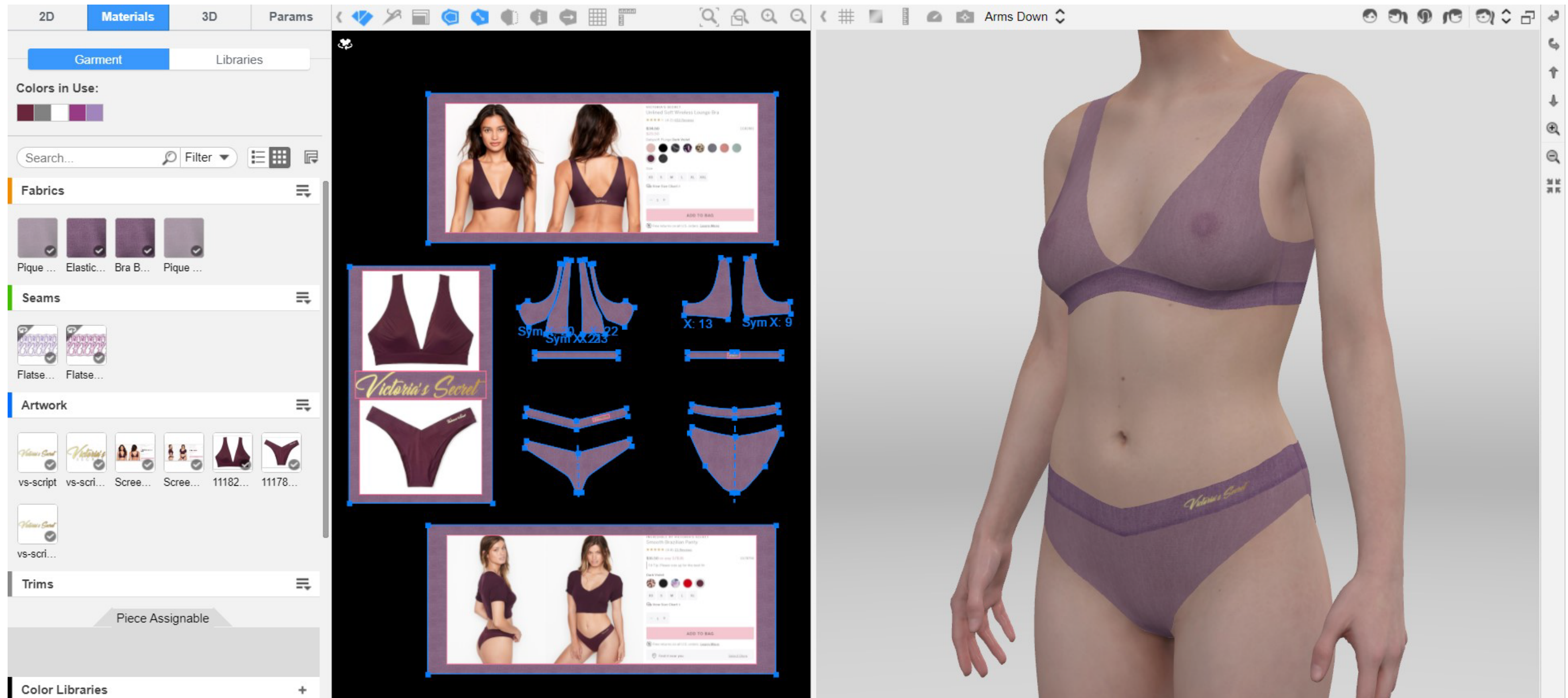


# 3D BRA AND PANTY SET

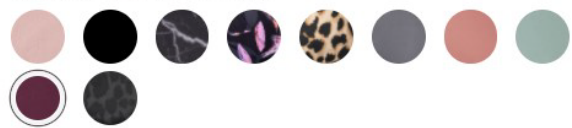
Bra and panty set created Browzwear's VStitcher.

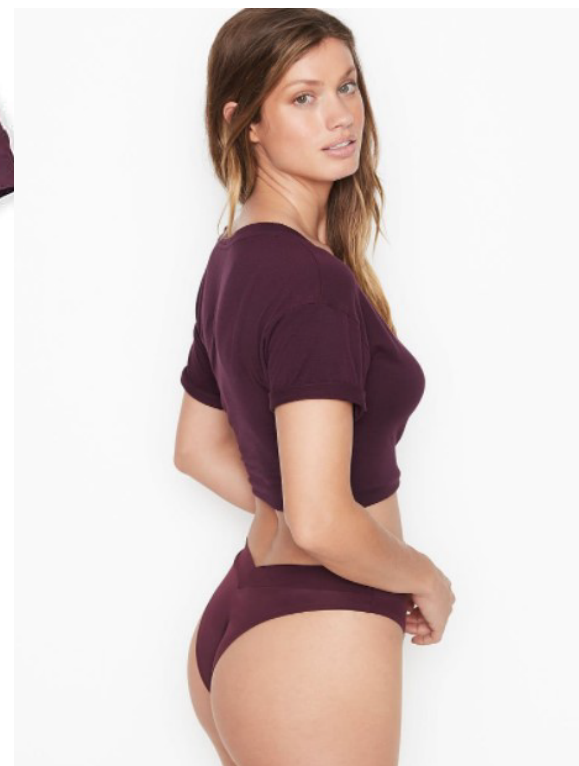



# 3D BRA AND PANTY SET

Inspired by Victoria's Secret Unlined Lounge Bra and Brazilian Panty.



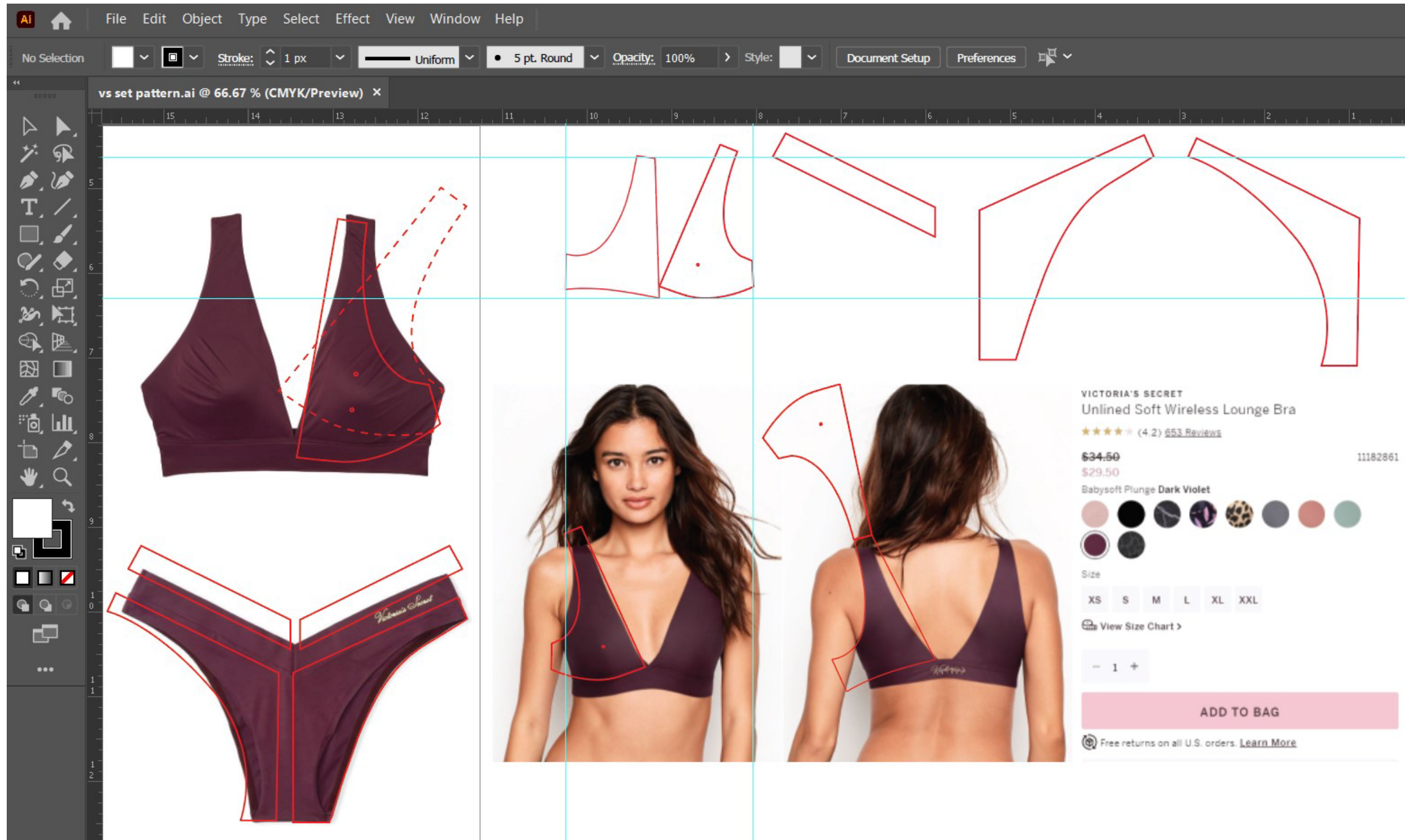
VICTORIA'S SECRET  
Unlined Soft Wireless Lounge Bra  
★★★★★ (4.2) [653 Reviews](#)  
\$34.50 11182861  
\$29.50  
Babysoft Plunge Dark Violet  
  
Size  
XS S M L XL XXL  
[View Size Chart >](#)  
- 1 +  
[ADD TO BAG](#)  
[Free returns on all U.S. orders. Learn More](#)



INCREDIBLE BY VICTORIA'S SECRET  
Smooth Brazilian Panty  
★★★★★ (4.8) [23 Reviews](#)  
\$16.50 or any 3/\$36 11178756  
Fit Tip: Please size up for the best fit.  
Dark Violet  
  
XS S M L XL  
[View Size Chart >](#)  
- 1 +  
[ADD TO BAG](#)  
[Free returns on all U.S. orders. Learn More](#)  
[Find it near you](#) [Select Store](#)

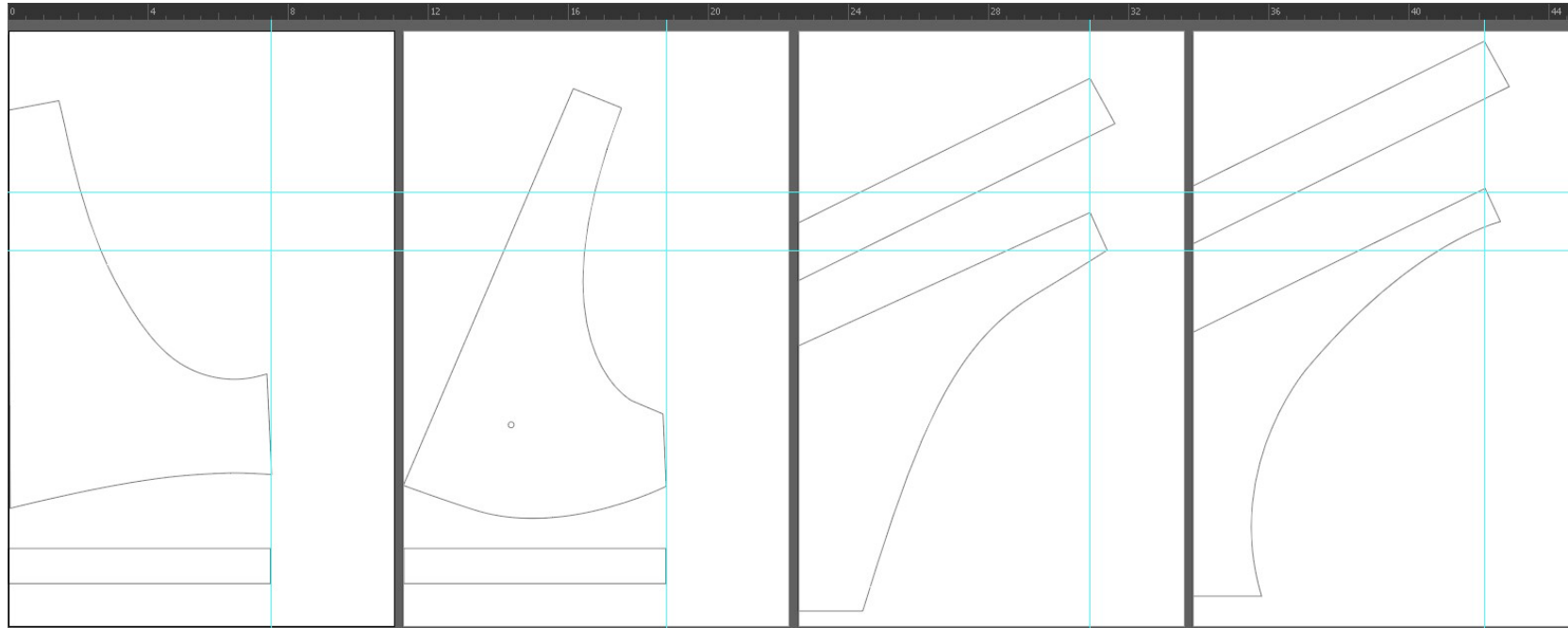
# 3D BRA AND PANTY SET

Pattern created in Adobe Illustrator.



# 3D BRA AND PANTY SET

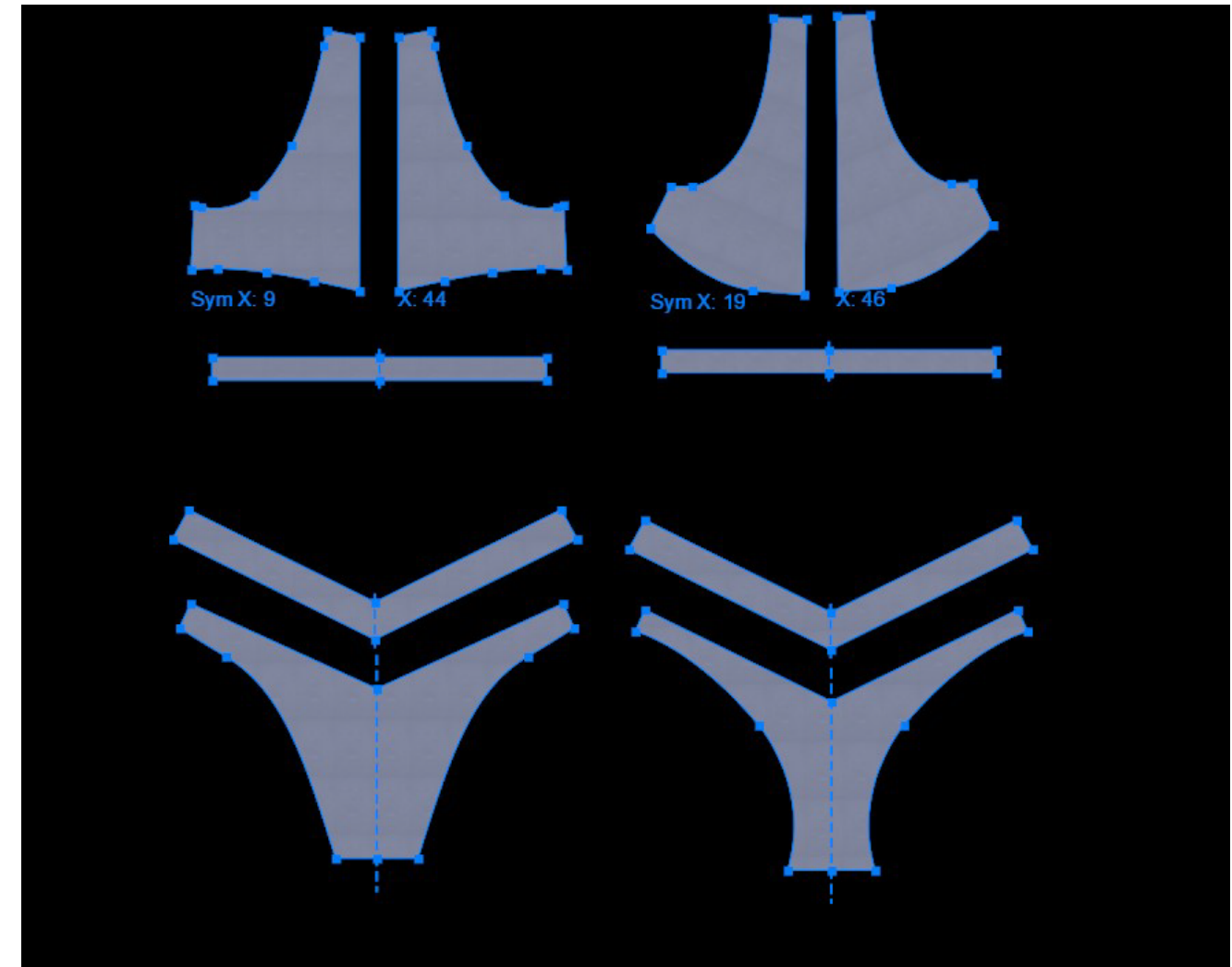
Pattern created in Adobe Illustrator.



Next, pattern imported into VStitcher.

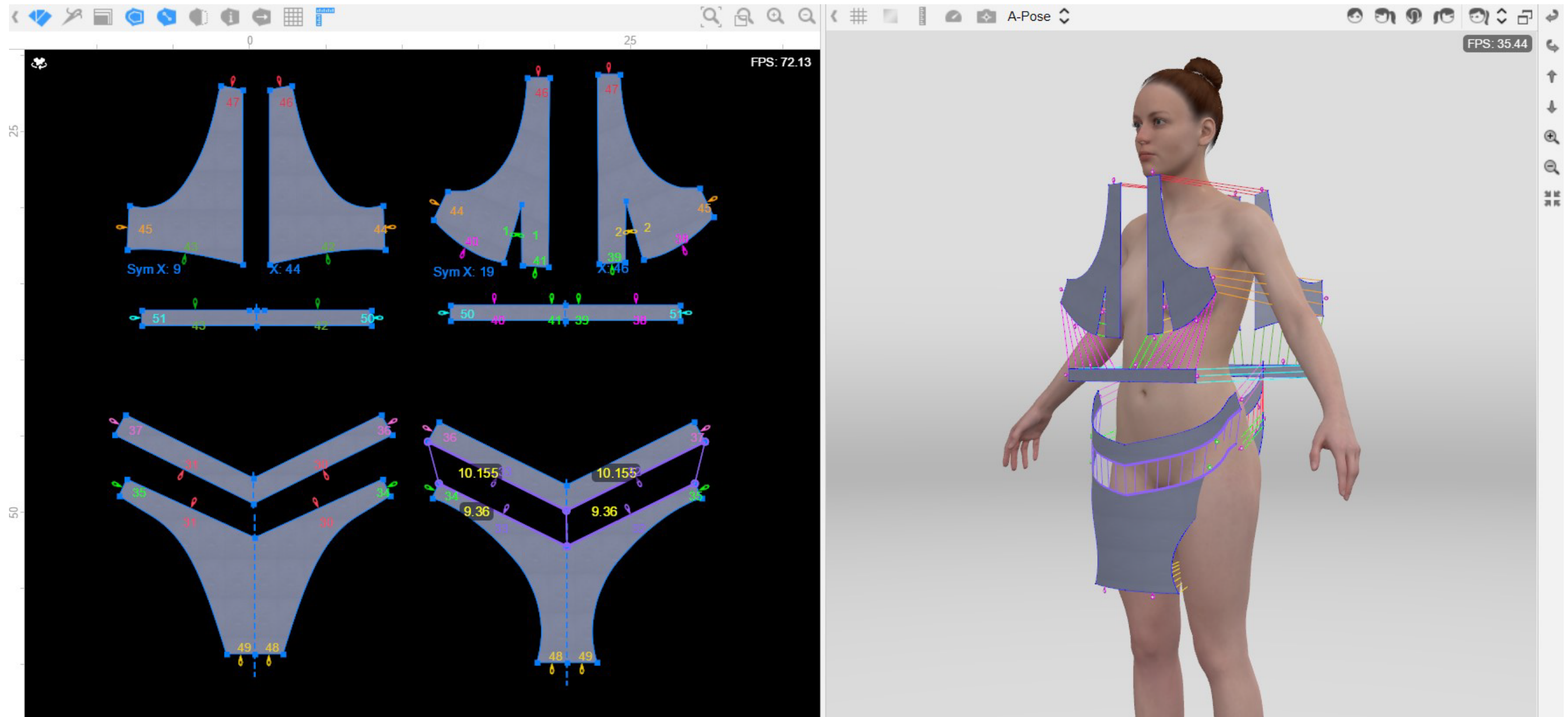


Imported pattern, symmetrized.



# 3D BRA AND PANTY SET

Pattern pieces sewn in VStitcher.



# 3D BRA AND PANTY SET

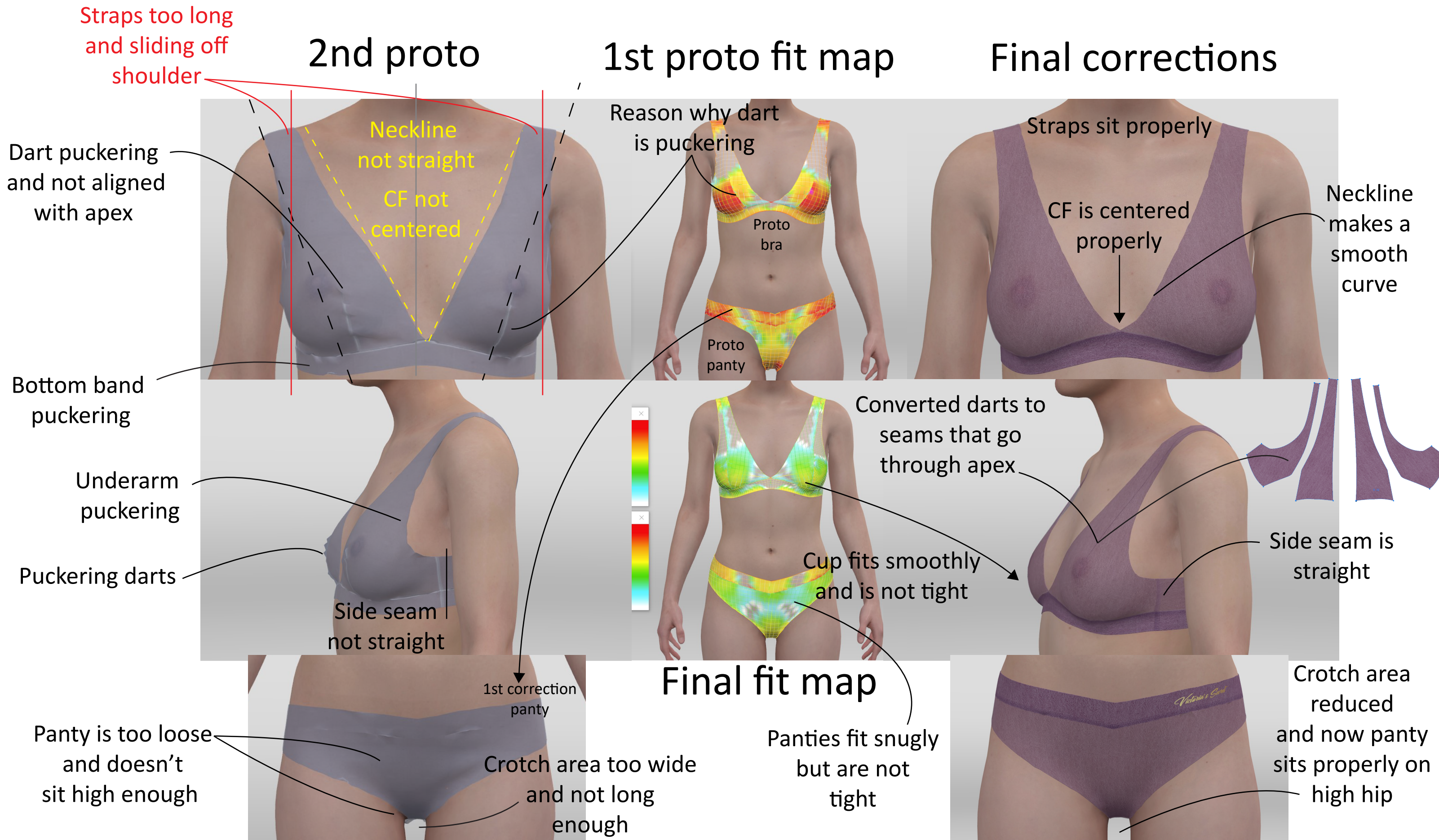
## 1st proto sample

Sample is both too loose yet too tight as depicted in the red areas.

The first proto correction on the next page over compensated for the tightness below and was too large.



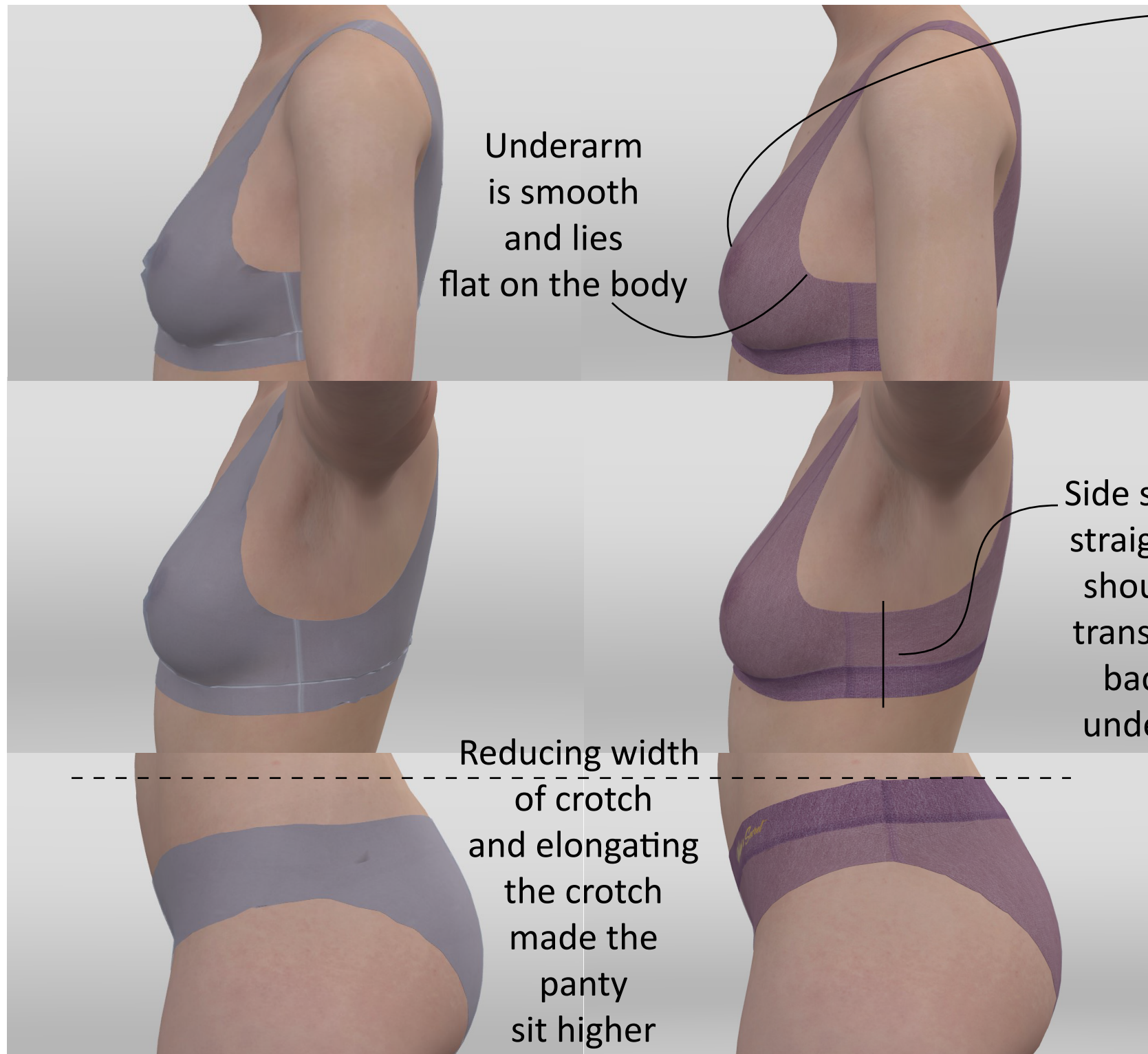
# 3D BRA AND PANTY SET



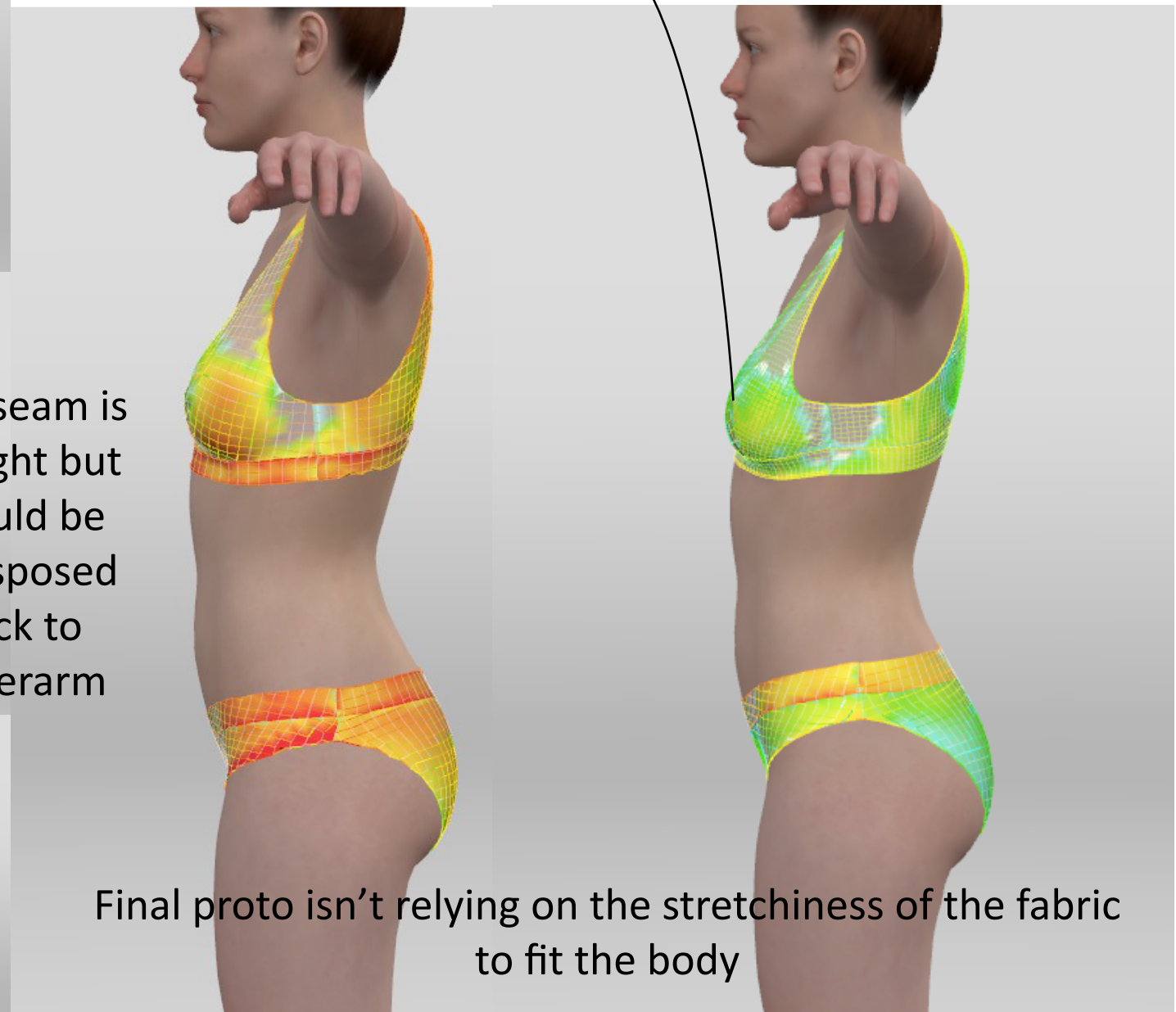
# 3D BRA AND PANTY SET

2nd proto

Final proto



Cup fits smoothly and is not tight



Final proto fit map



# 3D BRA AND PANTY SET

Back band isn't puckering and lays flat.

Straps sit properly.

2nd proto

Final proto

Underarm isn't cutting into arm pit.



Waistband is lies flat and is smooth

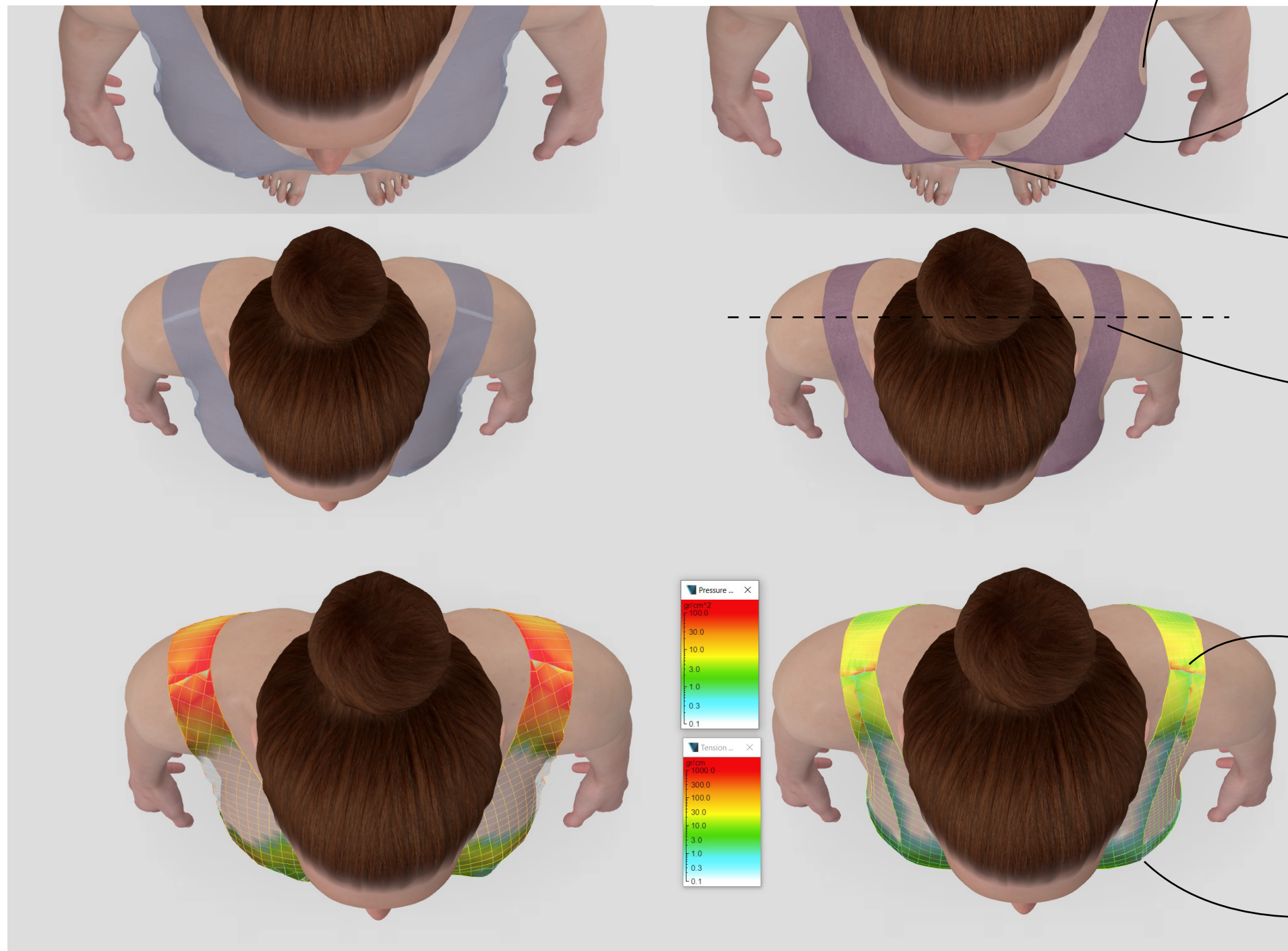
Panty crotch is not sagging

Final proto isn't relying on the stretchiness of the fabric to fit the body

# 3D BRA AND PANTY SET

## 2nd proto

## Final proto



Underarm lying flat and smooth.

Cup is smooth over the curvature of the bust.

Center front sinking into sternum.

Shoulder seam with appropriate placement but can be made more horizontal

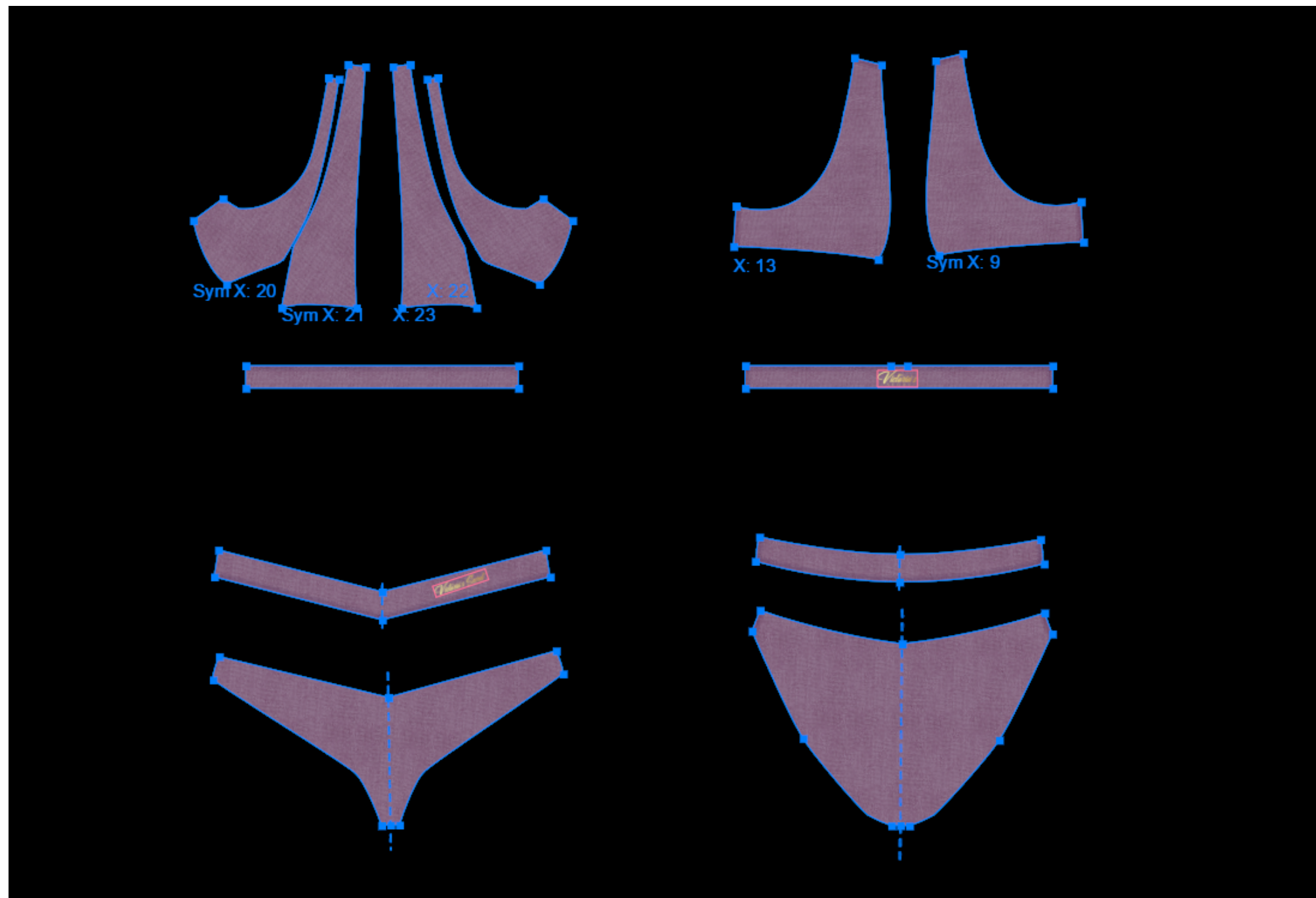
Appropriate pressure from the straps

Front cup is lying flat and contributes to bust support.

# 3D BRA AND PANTY SET

## Pattern after corrections and adjustments.

Rotated and changed the dart to a seam of the bra. Rounded the back waistband of the panty.



# 3D BRA AND PANTY SET

Artwork.



# 3D BRA AND PANTY SET

Colorways.



# 3D BRA AND PANTY SET



**FIT**

**INTRO TO BROWZWEAR'S  
VSTITCHER**

SUBJECT AREA  
**CREATIVE TECHNOLOGY**

**CERTIFICATE OF COMPLETION**

**CENTER FOR CONTINUING  
AND PROFESSIONAL STUDIES**